The background of the entire page is a photograph of a large outdoor event, likely a conference or gala, held at sunset. The sky is a mix of orange, pink, and purple. In the foreground, there are several palm trees with their fronds silhouetted against the sky. Below the trees, a large crowd of people is gathered around numerous round tables. The tables are set with white tablecloths, glassware, and plates. Many of the tables have large, white, umbrella-like heaters or shade covers over them. The overall atmosphere is festive and social. The text is overlaid on the upper half of the image.

The Preeminent National Gathering of Home Care Leaders

HOME CARE 100

January 25 - 28, 2026

Phoenician Scottsdale, Arizona

homecare100.com



About Us

Our Mission

To inspire excellence in **leadership, strategy** and **innovation** in home-based care through exceptional insights and exceptional communities.

How We're Different

You'll interact with providers in a more meaningful way than other events. We are not a trade show and there are no exhibit halls. Over three days, you'll be shoulder-to-shoulder with leading providers in an experience designed around **visionary learnings** on the future of the sector, and **building relationships** with an extraordinary community of thought leaders — all in a remarkable setting.

Who's Invited

Home Care 100 is **exclusively for C-level** executives from large home-based care and hospice providers (minimum of \$30MM in revenue).

Dates & Location

With unprecedented demand for our original business insights and extraordinary community of thought leaders, Home Care 100 is hosted twice annually to ensure a **purposefully intimate** and **individualized** experience for attendees.



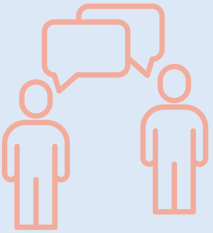
June 1-4, 2025
Waldorf Astoria Monarch Beach
California



January 25 - 28, 2026
Phoenician Scottsdale
Arizona

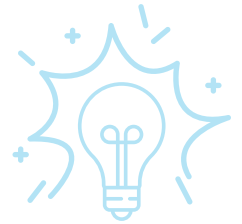
About Us

Home Care 100 is a community of 100 leading providers from across the country all centered on improving how home-based care is delivered. Through two leadership conferences and our Intelligence Group, a year-round executive advisory group, we not only clarify the future but ensure you get there successfully. Home Care 100 is convened by Lincoln Healthcare Leadership, a healthcare intelligence company that works to improve the U.S. healthcare system toward higher quality, lower cost and more coordinated care.



Sector Experience

With 25+ years' experience in senior care, we are deeply connected to the home-based care ecosystem. We have established relationships with top operators, engage with CEOs year-round, and are highly attuned to the business environment, needs and trends.

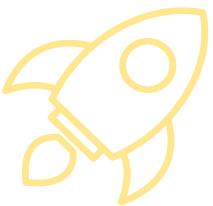


Commitment to Innovation

Leaders recognize Home Care 100 as their trusted, undisputed source for where the sector is headed, especially with innovation. We keep a pulse on emerging opportunities and showcase the inventive models and technologies transforming home-based care.

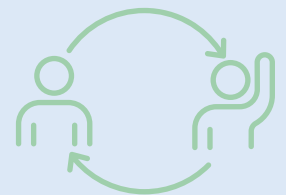
The HOME CARE 100 Difference

If strategic relationships with home-based care operators are valuable to your business, **there's only one place you need to be.**



Visionary Content

Our content is the best of any conference. Period. It's bold, original and equips providers to be exceptional in their leadership, strategy and innovation. Our best-in-class content attracts ambitious operators who are eager to learn and have important conversations about their business. You also become an even better thought leader to clients, and get new insight into your own product development and marketing.



True Partnership

Partners are more than a logo at Home Care 100. We understand your objectives, and who your key prospects are, to create a customized and productive business development experience for you. You are positioned as a consultative peer to C-level leaders, and high-quality connections are facilitated for you before, during and after Home Care 100.



Four Major Benefits

Home Care 100 is designed to help you substantially grow your market share with the top segment of home-based care operators.

Access

Home Care 100 delivers **40% of the total home care market**, representing about \$55B in buying power. Additionally, 80% of our attendees are C-level, offering an **unparalleled opportunity for your senior leaders** to be alongside a highly-engaged audience of peers from the largest providers in the country (\$150MM median revenue).

Relationship-Building

Partners receive detailed attendee intelligence to understand who you'd like to meet, then fully participate in a rich tapestry of relationship-building experiences. In addition to organic interactions, we orchestrate introductions to ensure you connect with priority prospects.



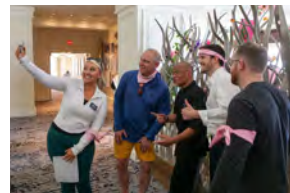
Attendee Intelligence

- Attendee list with contact information
- Cocktail Book with profiles on every company and executive



One-on-One Meetings

- 10-minute meetings
- Pre-scheduled
- One partner executive with one provider executive



Arranged Networking

- Assigned seating at select meals and experiences
- Kept to small groups



Small Group Meetings

Informal group discussion between a provider and a few partners to learn about your businesses

Positioning & Branding

Home Care 100 partners are positioned as **consultative peers** to providers and receive **extensive branding** and **data intelligence**.

Educational Value

Home Care 100's visionary educational program helps you become an **even better thought leader** for your clients, helping them navigate the dramatic changes occurring across the home care sector. The future-looking program will provide insights into your own **new product development and marketing**.



2025 Partners

Home Care 100 partners with a select group of high-quality solution companies who can support operators in overcoming their most pressing challenges. *Current listing at homecare100.com*

Premier

Axxess

CareXM, LLC

Homecare Homebase

HospiceMD

KanTime

MatrixCare by ResMed

McKesson Med-Surg

Netsmart/McBee

WellSky

Leadership

AlayaCare

AxisCare

CareConnect

Dragonfly Health

SimiTree

Executive

Accreditation Commission for Health

Care

BetterRX

Capital One - TripleTree

Element5

Enclara Pharmacia

Forcura

Forvis Mazars

IntellaTriage

Medalogix

Nestmed

Red Road Healthcare Business Solutions

Select Data

Trella Health

TwinMed

UKG™

2025 Partners

Contributor

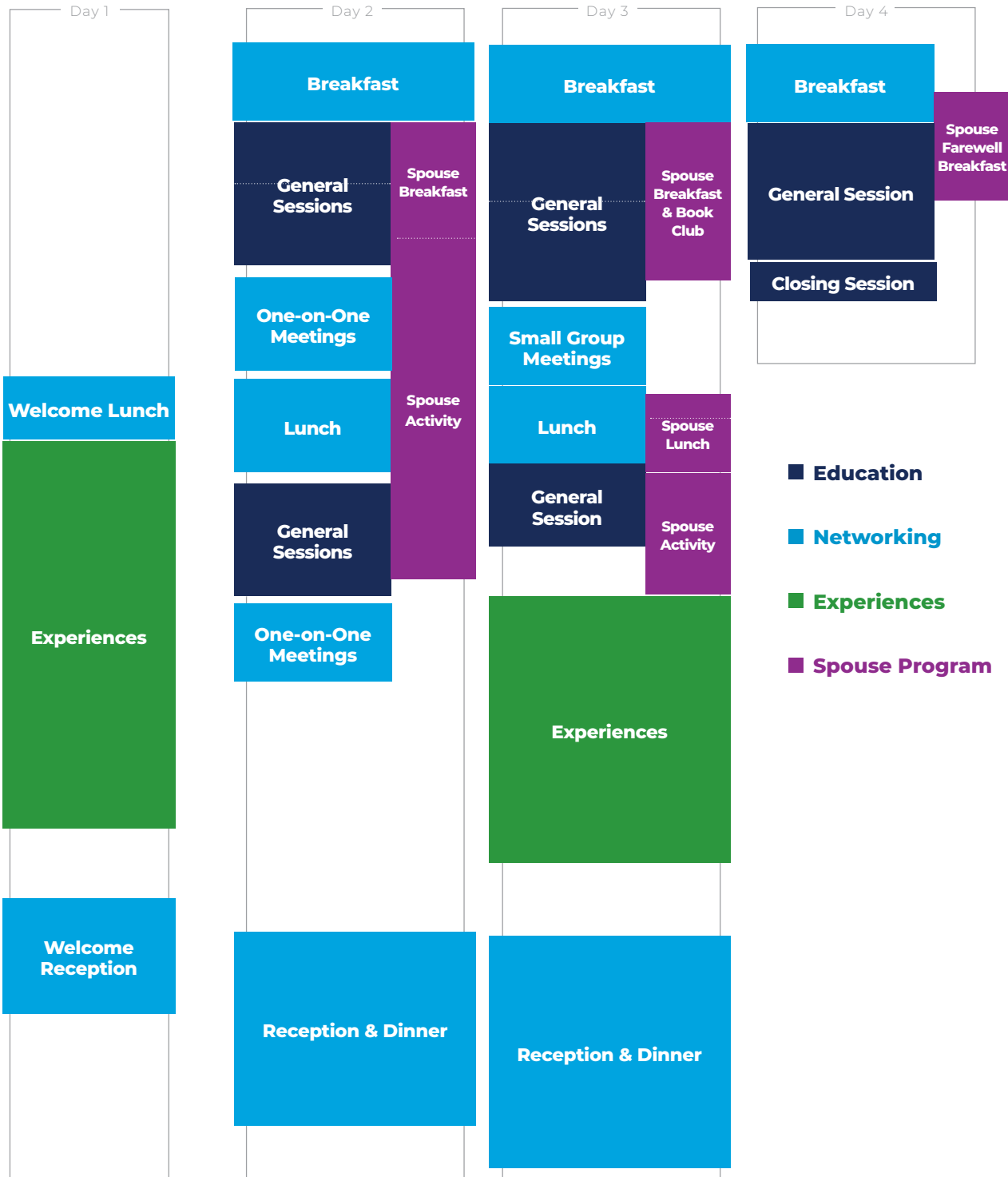
AnewHealth	nVoq
Apploi	OnePoint Patient Care
CLA	Polsinelli, PC
Enzo Health	POM Safe
Health Recovery Solutions (HRS)	Provident Healthcare Partners, LLC
Hospice Dynamix	QAPIplus
Houlihan Lokey	Stratix
Kno2	Swift Medical
Maxwell Healthcare Associates	The Braff Group
MedBridge	Zebra Technologies
Medline Industries, LP	Ziegler

Participant

Alliant Insurance Services, Inc.	Life Detection Technologies
Apricot	Lincoln International
Arya	MissionCare Collective
AutomationEdge	Newvon
Axle Health	Ok Alone
AZ Billing	Olli Health
Bailey & Company	Parachute Health
BEYOND HC LLC	Perry
Caribou Rewards	Qualis
CDW Healthcare	Robinson & Cole LLP
Clasp	Roger Healthcare
Community Health Accreditation Partner	Sheppard Mullin
connectRN	Skyra.AI
Empeon	Skyscape/BUZZ
Goodworks	StenoHealth
Harris Williams	Tallio
HHAExchange	Tennr
Hypori	Transcend Strategy Group
KATANA Safety	WorldView, Ltd.
Levo	Zingage



Sample Schedule



- Education
- Networking
- Experiences
- Spouse Program